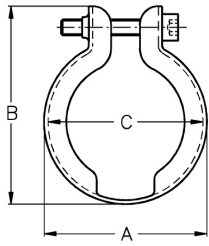
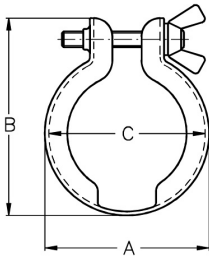


KF Kleinflansche DIN 28403 + ISO 2861, Edelstahl, Aluminium
Art.Nr.
EUR
Art.Nr.
EUR
Spannring FL-Compact

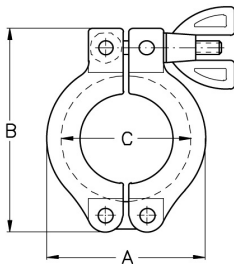
DN	A	B	C			AISI304	
10/16	36	45	33,5			110110	6,40
20/25	46	57	43,5			110111	7,60
32/40	61	74	58,5			110112	9,40


Spannring FL-Spezial

DN	A	B	C			AISI304	
10/16	36	45	33,5			110210	8,40
20/25	46	57	43,5			110211	9,60
32/40	61	74	58,5			110212	11,40


Spannring FL-Optimal

DN	A	B	C	AE, Aluminium-Edelstahl		AS, Aluminium-Stahl	
10/16	45	62	34	110410	15,40	110310	8,90
20/25	55	73	44	110411	16,90	110311	10,50
32/40	70	90	59	110412	19,40	110312	12,10
50	95	125	80	110407	32,40	110307	24,10


Spannring FL-Optimal EE

DN	A	B	C			AISI304	
10/16	45	62	34			110510	28,30
20/25	55	73	44			110511	32,10
32/40	70	90	59			110512	36,30
50	95	125	80			110507	42,10

