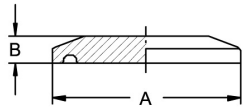


**Klemmverbindung DIN 32676, Flansch Ø 34–319**

Art.Nr. EUR Art.Nr. EUR

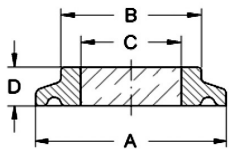
**Blind-Klemmstutzen**



| DN    | A     | B    | ASME    | ISO-DN    |  | AISI316L-1.4404 | AISI316L-1.4435 |        |         |
|-------|-------|------|---------|-----------|--|-----------------|-----------------|--------|---------|
| 10-20 | 34    | 6,35 | -       | -         |  | 230260          | 13,20           | 232360 | Anfrage |
| 25-40 | 50,5  | 6,35 | 1"-1,5" | 21,3-33,7 |  | 230216          | 15,40           | 232316 | Anfrage |
| 50    | 64    | 6,35 | 2"      | 42,4-48,3 |  | 230205          | 18,20           | 232305 | Anfrage |
| 2,5"  | 77,5  | 6,35 | 2,5"    | 60,3      |  | 230206          | 27,30           | 232306 | Anfrage |
| 65    | 91    | 6,35 | 3"      | 76,1      |  | 230207          | 34,90           | 232307 | Anfrage |
| 80    | 106   | 6,35 | -       | 88,9      |  | 230238          | 43,30           | 232338 | Anfrage |
| 100   | 119   | 8    | 4"      | -         |  | 230208          | 53,20           | 232308 | Anfrage |
| 115 * | 130   | 8    | 4,5"    | 114,3     |  | 230209          | 100,50          | 232309 | Anfrage |
| 125   | 155   | 8    | 5,5"    | 139,7     |  | 230241          | 107,50          |        |         |
| 150   | 183   | 14   | 6,6"    | 168,3     |  | 230242          | 133,80          |        |         |
| 200   | 233,5 | 14   | 8,6"    | 219,1     |  | 230244          | 230,20          |        |         |
| 250 * | 268   | 14   | 10"     | -         |  | 230246          | 300,90          |        |         |
| 300 * | 319   | 14   | 12"     | -         |  | 230248          | 361,40          |        |         |

\* Ähnlich DIN 32676

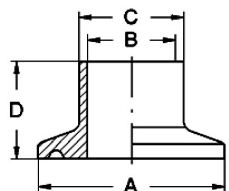
**Klemm-Schauglas, verschmolzen**



| DN    | A     | B   | C   | D  | bar |  | 1.4462-Borosilikat |          |
|-------|-------|-----|-----|----|-----|--|--------------------|----------|
| 10-20 | 34    | 21  | 12  | 7  | 16  |  | 231160             | 159,90   |
| 25-40 | 50,5  | 41  | 25  | 10 | 16  |  | 231116             | 169,20   |
| 50    | 64    | 52  | 30  | 10 | 16  |  | 231105             | 182,20   |
| 2,5"  | 77,5  | 69  | 35  | 10 | 10  |  | 231106             | 202,40   |
| 65    | 91    | 76  | 40  | 10 | 10  |  | 231107             | 238,50   |
| 80    | 106   | 90  | 50  | 10 | 10  |  | 231138             | 272,30   |
| 100   | 119   | 100 | 55  | 12 | 10  |  | 231108             | 337,60   |
| 115   | 130   | 114 | 60  | 16 | 10  |  | 231109             | 497,80   |
| 125   | 155   | 30  | 65  | 16 | 6   |  | 231141             | 629,60   |
| 150   | 183   | 160 | 75  | 16 | 6   |  | 231142             | 746,80   |
| 200   | 233,5 | 210 | 100 | 18 | 6   |  | 231144             | 967,20   |
| 250   | 268   | 245 | 120 | 20 | 6   |  | 231146             | 1.232,00 |
| 300   | 319   | 300 | 140 | 22 | 6   |  | 231148             | 1.842,50 |

-30 °C bis 280 °C

**Klemmstutzen DIN, kurz**



| DN    | A    | B     | C     | D    |  | AIS316L-1.4404 | AISI304 |        |       |
|-------|------|-------|-------|------|--|----------------|---------|--------|-------|
| 10    | 34   | 10    | 13    | 18   |  | 230730         | 17,40   | 230630 | 14,30 |
| 15    | 34   | 16    | 19    | 18   |  | 230731         | 17,40   | 230631 | 14,30 |
| 20    | 34   | 20    | 23    | 18   |  | 230732         | 17,40   | 230632 | 14,30 |
| 25    | 50,5 | 26    | 29    | 21,5 |  | 230733         | 19,70   | 230633 | 18,40 |
| 32    | 50,5 | 32    | 35    | 21,5 |  | 230734         | 20,40   | 230634 | 19,20 |
| 40    | 50,5 | 38    | 41    | 21,5 |  | 230735         | 21,80   | 230635 | 19,80 |
| 50    | 64   | 50    | 53    | 21,5 |  | 230736         | 23,10   | 230636 | 20,60 |
| 65    | 91   | 66    | 70    | 28   |  | 230737         | 33,80   | 230637 | 23,70 |
| 80    | 106  | 81    | 85    | 28   |  | 230738         | 51,20   | 230638 | 45,10 |
| 100   | 119  | 100   | 104   | 28   |  | 230739         | 70,40   | 230639 | 56,30 |
| 115 * | 130  | 109,7 | 114,3 | 28   |  | 230709         | 109,70  | 230609 | 96,70 |

\* Ähnlich DIN 32676