

ISO-K Klammerflanschverbindungen DIN 28404 + ISO 1609

Art.No.

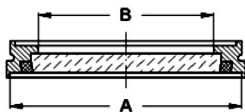
EUR

Art.No.

EUR

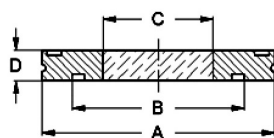
ISO-K Schauglas
ISO-K Sight glass

DN	A	B					AISI304 Borosilikat-FKM	
63	95,2	72					333210	281,70
100	130,2	104					333213	416,80
160	180,2	153					333217	608,10



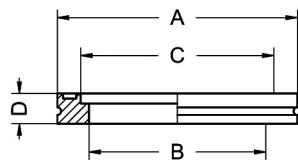
ISO-K Schauglas, verschmolzen
ISO-K Sight glass, fused

DN	A	B	C	D			1.4462-Borosilikat	
63	95	70	50	12			331010	247,80
100	130	102	65	12			331013	375,70
160	180	153	90	12			331017	606,50
200	240	213	120	12			331019	970,40
250	290	261	140	12			331021	1.345,90



ISO-K Anschweißflansch
ISO-K Welding flange

DN	A	B	C	D			AISI304	
63	95	70	76,2	12			330210	33,50
100	130	102	108,3	12			330213	38,30
160	180	153	159,4	12			330217	61,80
200	240	213	219,5	12			330219	155,80
250	290	261	273,4	12			333421	234,70



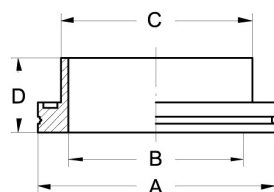
DN	A	B	C	D			AISI316L	
63	95	70	70,5*	12			333310	Anfrage
100	130	102	105*	12			333313	Anfrage
160	180	153	155*	12			333317	Anfrage
200	240	213	205*	12			333319	Anfrage
250	290	261	255*	12			333321	Anfrage

*Für Rohre DIN EN 10357 (DIN 11850)

*For tubes DIN EN 10357 (DIN 11850)

ISO-K Klammerflansch kurz
ISO-K Clamp flange short

DN	A	B	C	D			AISI304	
63	95	70	76,1	30			331110	Anfrage
100	130	102	108	30			331113	Anfrage
160	180	153	159	30			331117	Anfrage



LINNE MANN

Rohrverbindungen • Edelstahlmaturen
Pipe connections • Stainless steel fittings

LINNE MANN GmbH • Heerweg 14-16
72070 Tübingen / Germany

Fon: +49 (0) 7071 97555-0
Fax: +49 (0) 7071 97555-10

E-Mail: info@linne mann-online.com
Internet: www.linne mann-online.com