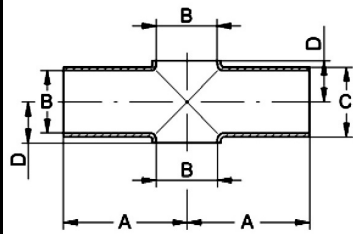
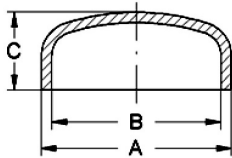


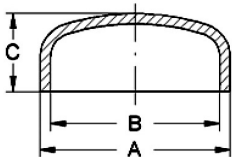
Schweißfittings DIN 11852

Art.No.
EUR
Art.No.
EUR
Kreuzstück Zoll, kurz
Cross piece inch, short


DN	A	B	C	D		AISI304		AISI316L-1.4404	
1"	50	22,9	25,4	14		562103	36,60	562203	47,90
1,5"	60	35,1	38,1	20		562104	42,80	562204	54,50
2"	70	47,8	50,8	27,5		562105	47,80	562205	57,90
2,5"	80	60,5	63,5	36		562106	61,20	562206	84,20
3"	90	72,1	76,1	44		562107	82,30	562207	102,10
4"	100	97,6	101,6	56		562108	105,60	562208	131,90
Ähnlich DIN 11852, Similar to DIN 11852									

Boden DIN, gewölbt
Bottom DIN, convex


DN	A	B	C			AISI304		AISI316L-1.4404	
25	29	26	17			568833	8,70	568933	10,90
32	35	32	14			568834	9,10	568934	11,50
40	41	38	17			568835	9,60	568935	12,30
50	53	50	18			568836	10,90	568936	13,80
65	70	66	21,5			537137	13,70	537237	17,30
80	85	81	24,5			537138	15,60	537238	19,40
100	104	100	28,5			537139	18,70	537239	22,80
125	129	125	33			537141	24,60	537241	35,20
150	154	150	38			537142	32,80	537242	41,60
200	204	200	48			537144	72,80	537244	87,70

Boden Zoll, gewölbt
Bottom inch, convex


DN	A	B	C			AISI304		AISI316L-1.4404	
2"	50,8	47,8	15			537305	11,10	537405	14,40
2,5"	63,5	60,5	18			537306	14,60	537406	18,50
3"	76,1	72,1	20			537307	16,40	537407	21,60
4"	101,6	97,6	25			537308	19,30	537408	24,40